



NATHAN K
REAL ESTATE
#NO1PROPERTYFINDER



34 Lordship Park, London, N16 5UD

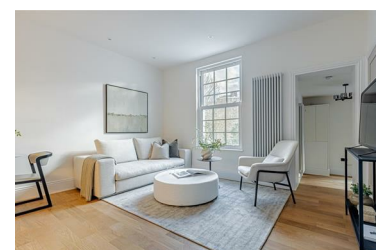
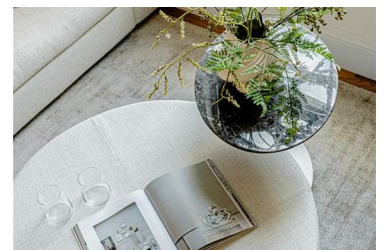
Asking price £550,000



Nestled in the charming area of Lordship Park, London, this delightful Victorian apartment offers a perfect blend of modern living and period charm. Originally built in 1900, this newly refurbished first-floor conversion boasts a spacious 550 square feet of well-designed accommodation.

The property features a large double bedroom, providing a serene retreat, alongside a modern bathroom that caters to contemporary needs. The highlight of the apartment is the south-facing open plan kitchen and living room, which creates a bright and inviting space ideal for both relaxation and entertaining. Additionally, there is a versatile study that can serve as a second bedroom, making this property suitable for a variety of lifestyles.

This apartment not only offers integrated Bosch appliances for modern convenience but also includes bike storage and access to communal gardens, enhancing the overall living experience. This property is a wonderful opportunity for those seeking a stylish home in a vibrant and well-connected



- Communal Gardens
- First Floor
- Lots of Natural Light
- Bike Storage
- Newly Refurbished
- Study / Second Bedroom
- Close to Clissold Park
- Integrated Bosch Appliances