



## Nathan K Real Estate

65 Amwell Street, London - EC1R 1UR

02034111143 • [ec1@nathankrealestate.com](mailto:ec1@nathankrealestate.com) • [nathankrealestate.com](http://nathankrealestate.com)



**NATHAN K**  
REAL ESTATE  
#NOTPROPERTYFINDER



## Flat B

171 Prince Of Wales Road, London

A two double bedroom split-level period conversion suited on the first and second floor of this well maintained terraced house.

Accommodation comprises; two double bedrooms, fully fitted kitchen, modern bathroom and a large living room.

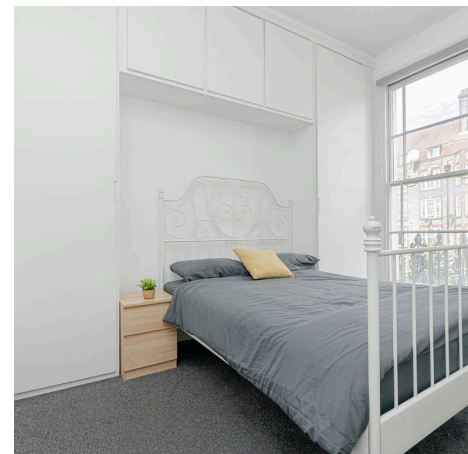
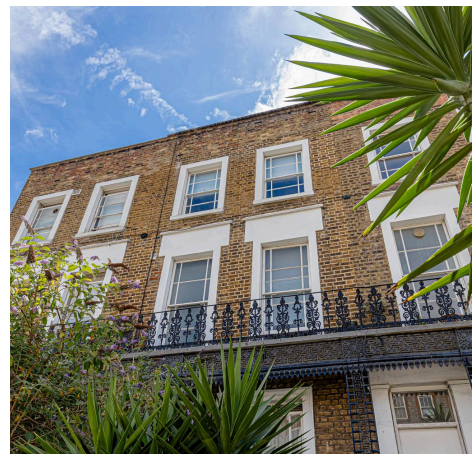
Council Tax band: D

Tenure: Leasehold

EPC Energy Efficiency Rating: D

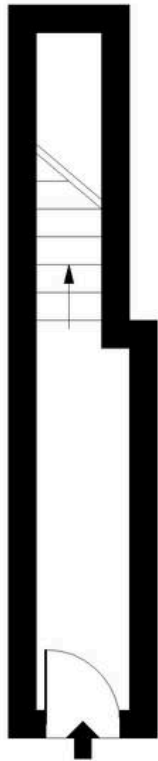
EPC Environmental Impact Rating: D

- Split-Level Period Conversion
- Two Double Bedrooms
- Large Windows & High Ceilings
- Chain Free
- Moments From Chalk Farm & Belsize Park
- Private Entrance



# Prince Of Wales Road NW9

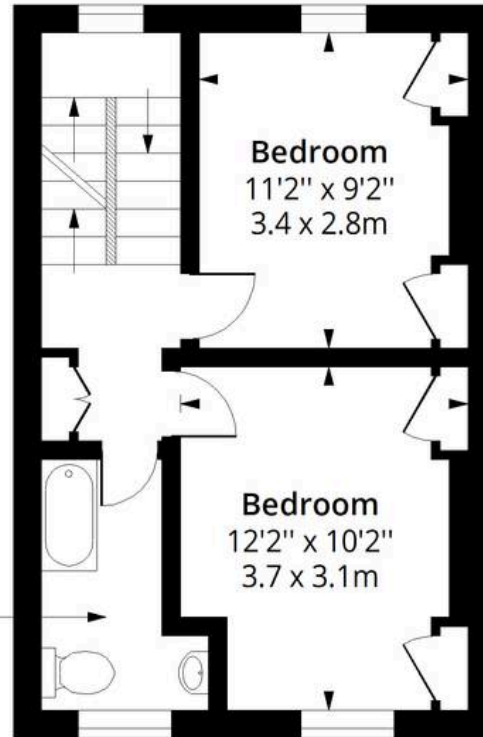
Approx. Gross Internal Area 790 Sq Ft - 73.40 Sq M



## Ground Floor

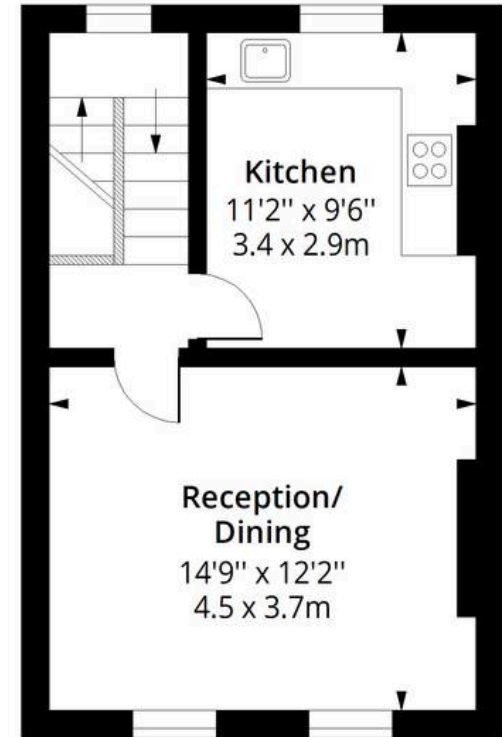
Floor Area 68 Sq Ft - 6.32 Sq M

8'10" x 5'11"  
2.7 x 1.8m



## First Floor

Floor Area 361 Sq Ft - 33.54 Sq M



## Second Floor

Floor Area 361 Sq Ft - 33.54 Sq M



Measured according to RICS IPMS2. Floor plan is for illustrative purposes only and is not to scale. Every attempt has been made to ensure the accuracy of the floor plan shown, however all measurements, fixtures, fittings and data shown are an approximate interpretation for illustrative purposes only. 1 sq m = 10.76 sq feet.



## Nathan K Real Estate

65 Amwell Street, London - EC1R 1UR

02034111143 • [ec1@nathankrealestate.com](mailto:ec1@nathankrealestate.com) • [nathankrealestate.com](http://nathankrealestate.com)

